



Signature™ ONE Planner

Features and Benefits Guide

Table of Contents

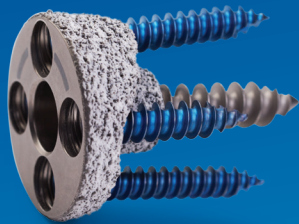
Introduction	1
Preview Anatomy	2
Signature ONE Comprehensive[®] Total Functionality	3-4
Signature ONE Comprehensive Reverse Functionality	5
Signature ONE TMR+[™] Shoulder Functionality	6
Alliance[™] Gelnoid Functionality	7
Final Review and Approval	8

Introduction

The Signature ONE Planner is the newest advance in visualization and virtual planning for shoulder arthroplasty. With a high-quality 3D scapula reconstruction, a clear and concise workflow, and simple selection and manipulation tools, it is designed to streamline the case planning process. Simple analysis tools like the Implant Contact Tool, Medial/Lateral Translation tool and 3D Measurement tool help the user to understand the implant-glenoid interface. The software provides clarity with the ability to see the 3D, coronal, and transverse views all on one screen, as well as to plan glenospheres and augmented baseplates. With support for the newest innovative implants like the TMR+ Shoulder, Comprehensive Augmented Baseplates, and Alliance Glenoids, users can quickly find optimal solutions for their shoulder cases.

Together with Signature ONE patient specific instruments, this personalized patient care system provides an advanced yet simple solution for glenoid component positioning.

IMPLANT SYSTEMS COMPATIBLE WITH SIGNATURE ONE SYSTEM



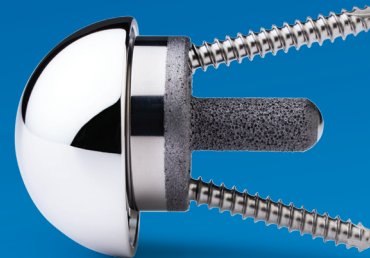
Comprehensive Augmented Baseplates



Comprehensive Modular Hybrid® Glenoid



Comprehensive Mini Baseplate



TMR+ Shoulder



Alliance Glenoid (Pure Planning only)

PREVIEW |
 SCAPULA |
 APPROVAL |
 2 Case ID: FMAR59R84JS18UO
 Surgeon: Dr. John Smith |
 Laterality: RIGHT
 Procedure: RSA |
 ABOUT |
 QUIT

1

3

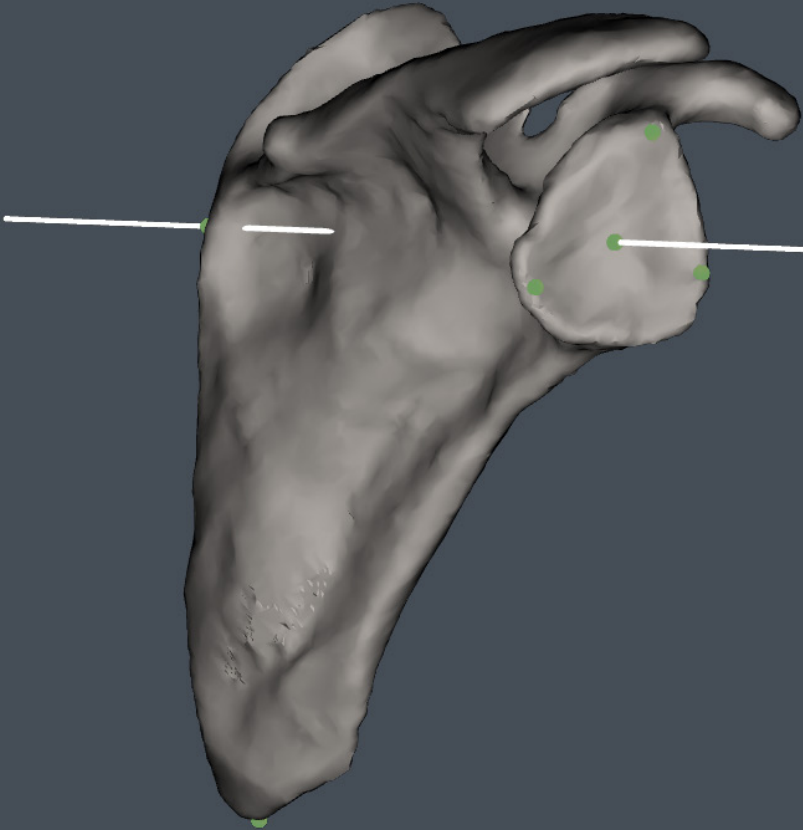
4

5

6

Native Glenoid Retroversion
-19.5°

Native Glenoid Inferior Indination
-3.5°



Features – Preview Tab

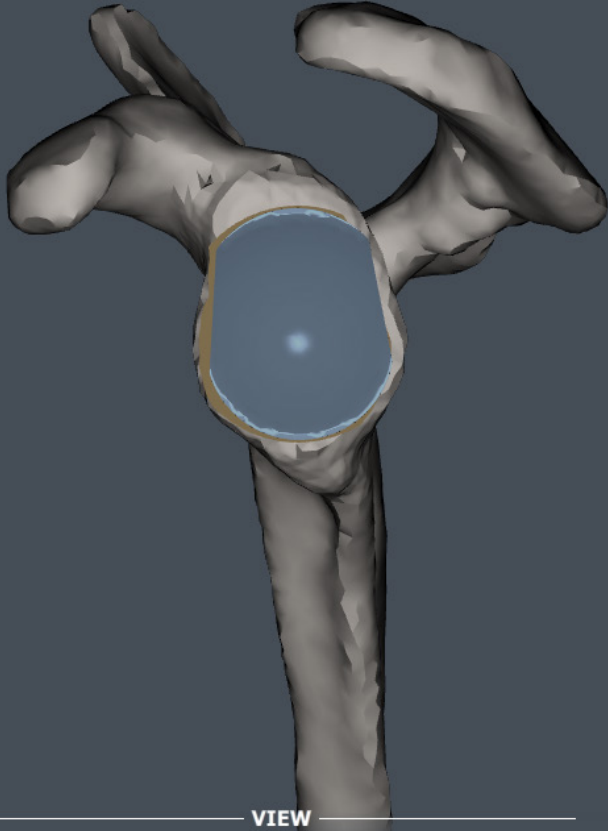
1. Preview, Scapula (Planning), and Approval tabs
2. Case specific information
3. Panel to view software information or quit
4. Native Version and Native Inclination
5. Movable 3D Reconstruction
6. Default Neutral Axis (Friedmann line)
7. Quick anatomical snap-views and zooming

7

VIEW
 LAT | MED | POST | ANT | INF | SUP



10 Implant Contact
97%



— SHOW —

- 11
- 12
- 13
-

— TOOL —

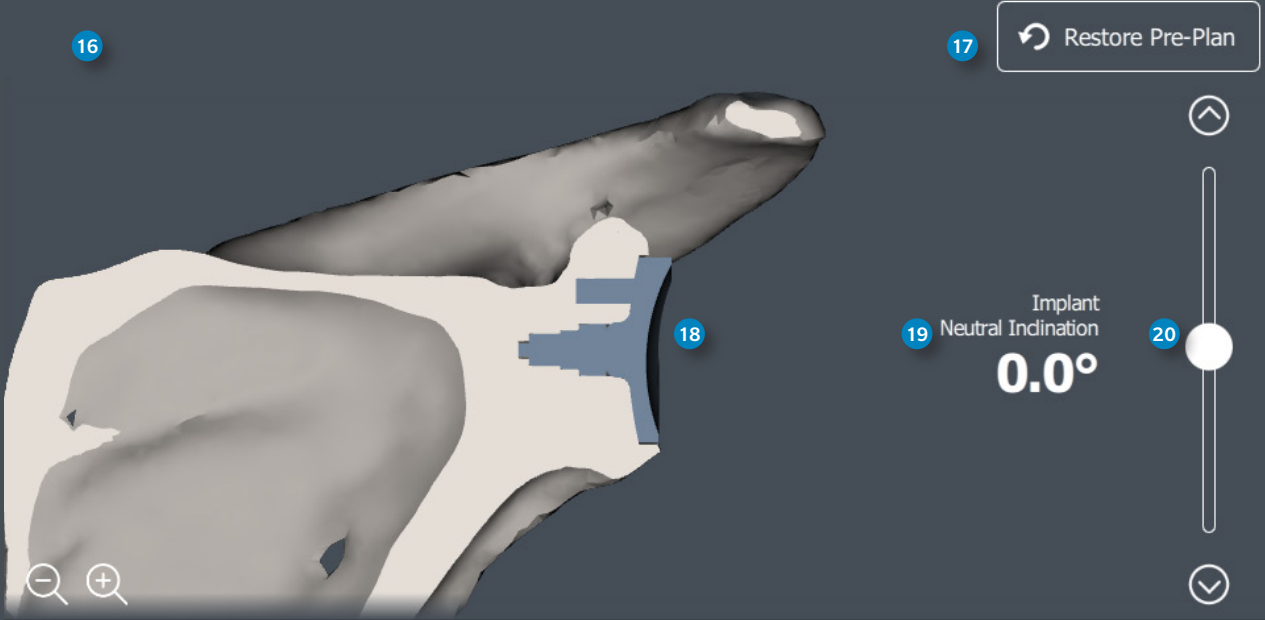
- 14
- 15
-

Features – Comprehensive Total (1/2)

- 8. Implant Selections
 - Comprehensive Total Shoulder (Hybrid Glenoid)
 - Comprehensive Reverse Mini (including Augmented Baseplates)
 - Trabecular Metal Reverse Plus™ (TMR+) Shoulder
 - Alliance Glenoid
- 9. Toggle Anatomic Implant Size (Small, Medium, Large)
- 10. Implant backing percentage
- 11. View Neutral Axis and Implant Axis
- 12. View glenoid implant or baseplate
- 13. View reamed geometry for current implant position
- 14. 3D manipulation of scapular view
- 15. Rotate implant or shift in the A/P and S/I directions.

Features – Comprehensive Total (2/2)

- 16. Coronal Plane View
- 17. Restore Default Plan
- 18. Alter implant inclination or shift position in coronal plane
- 19. Implant Inclination value
- 20. Slider to move Coronal Plane anterior and posterior
- 21. Transverse Plane View
- 22. Alter implant version or shift position in transverse plane
- 23. Implant Version value
- 24. Slider to move Transverse Plane superior and inferior



Implant Contact 27 **98%**

Medial/Lateral Translation **7.5 mm** 31

Implant Neutral Inclination **0.0°**

Implant Neutral Version **0.0°**

SHOW: 30, 31

TOOL: 28, 29, 30, 31

Features – Comprehensive Reverse

- 25. Toggle implants: Mini and Augments (SM, MD, LG)
- 26. Toggle Central Screw (20, 25, 30, 35, 40, 45, 50 mm)
- 27. Reverse implant backside contact displayed visually and as a percentage.
- 28. When using augments, triangle reference for augment orientation.
- 29. Rotate implant or shift in the A/P and S/I directions
- 30. Deepest point tool shows deepest point on glenoid surface.
- 31. Lateralization tool shows most lateral glenoid point, center of baseplate backside, and provides the user with the depth measurement between these points

Implant Contact: **100%**

SHOW

- 35

VIEW

* LAT | MED | POST | ANT | INF | SUP

TOOL

- 38

Superior Screw S/I Angle: **5.0°**

Superior Screw AP Angle: **0.0°**

Features – TMR+

- 32. TMR+ Post Sizes: (15, 20, 25, 30 mm)
- 33. TMR+ Screw Sizes: (18, 24, 27, 30, 33, 36, 42, 48mm)
- 34. Glenosphere Sizes, Eccentricities, and Lateral Offsets
- 35. Toggle On/Off Glenosphere
- 36. Peripheral screw S/I and A/P Angle
- 37. A warning will appear if peripheral screws reach angle limits
- 38. Select screw in each cut plane view and modify screw angle using the rotation arrows.

IMPLANT SYSTEM: Alliance

GLENOID: 4 PEGS | MODULAR | AUG RIGHT | 3

NUMBER OF PEGS	PEG TYPE	AUG	SIZE
2 PEGS	MODULAR	NON AUG	2
3 PEGS		AUG LEFT	3
4 PEGS		AUG RIGHT	4
			5

39

— TOOL —

Implant Neutral Inclination: 0.0°

Implant Neutral Version: 0.0°

— SHOW —

VIEW: LAT | MED | POST | ANT | INF | SUP

40

Restore Pre-Plan

Features – Alliance

39. Alliance Implant Selection menu allows the user to select peg configuration, peg type, augment option, and size.

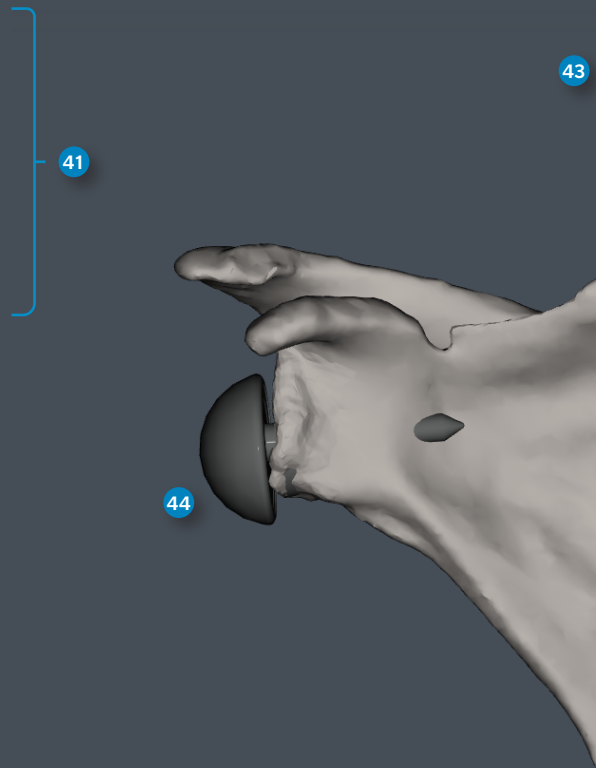
40. The 3D Measurement Tool displays the 3D distance between any two points selected by the user.

PLANNING VALUES

Baseplate Inclination: -5.0°
 Baseplate Version: -3.5°
 Implant System: Comprehensive Reverse
 Baseplate Size: Augment Medium
 Central Screw Length: 35mm
 Glenosphere Size: 36mm | Standard | 1.5mm

ORDERING OPTIONS

Pure Planning
 Signature Guides & Bone model
 Bone model only



COMMENTS

Input your comments here...

SURGEON'S APPROVAL

Approve

VIEW LAT | MED | POST | ANT | INF | SUP

Features – Approval Page

- 41. Approval page summary of planning values
- 42. Surgeon may choose to plan only or to order patient specific guides and bone model. There are reminders to ensure the surgeon has the correct instruments for the case
- 43. Comments section for surgeon to add notes.
- 44. Surgeon can view final plan in 3D
- 45. Once the surgeon has reviewed their pre-operative plan, they can select Approve to finalize their case plan. If guides were requested, once the approval is done the case automatically moves to guide production.



2619.1-GLBL-en-REV0420

All content herein is protected by copyright, trademarks and other intellectual property rights, as applicable, owned by or licensed to Zimmer Biomet or its affiliates unless otherwise indicated, and must not be redistributed, duplicated or disclosed, in whole or in part, without the express written consent of Zimmer Biomet.

This material is intended for health care professionals. Distribution to any other recipient is prohibited.

For indications, contraindications, warnings, precautions, potential adverse effects and patient counseling information, see the package insert or contact your local representative; visit www.zimmerbiomet.com for additional product information.

Check for country product clearances and reference product specific instructions for use. Not for distribution in France.

© 2020 Zimmer Biomet